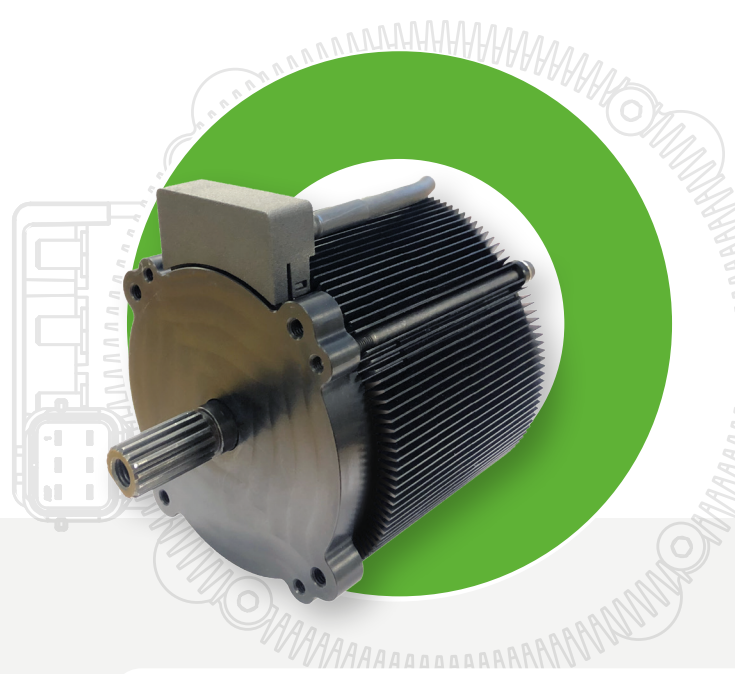


MOTOR DATA SHEET

SLV120



An innovator in magnetics and power efficiency. Our patented technology delivers advanced electric motors, power controllers and inverters to the Off-Highway sector.

Developed from over 15 years of research and expertise, our technology answers the unmet need for a market leading, efficient and inexpensive electric drive system alternative to traditional internal combustion engines and some existing electric motors.

Our game-changing electric motor topology offers advanced efficiency, high performance and a cost-effective solution removing reliance on hydrocarbon fuel sources and rare-earth magnets whilst minimising manufacturing processes.

Multiple applications

- Pedestrian mower
- Lawn tractor
- Zero turn mower
- Small cement mixer
- Leaf blower
- Small dumper
- Skid steer loader
- Scrubber drier

System specification

Rated torque	7.5Nm
Peak torque (1s)	25Nm
Continuous power	2.5kW
Peak power	7.5kW
Max operating speed	6000rpm

Electrical specification

Voltage range	Continuous current
0-90V (6,000rpm)	84A (7.5Nm)

Mechanical specification

Dimensions	Weight
See drawing*	2.5kg

Poles count
16

Thermal specification

Maximum winding temperature	110°C
-----------------------------	--------------

